



SIRIUS

Software Installation and Activation Guide





1. INTRODUCTION

The purpose of this document is to assist the contractor / reseller / owner in the installation on the SIRIUS monitoring software and the activation of the SIRIUS after installation.

The manual applies to:

1. Kilowatt Labs Sirius 3550-48-A-1.35C-M-SD-G
2. Kilowatt Labs Sirius 7100-48-A-1.35C-M-SD-G

To start the SIRIUS after installation or after the SIRIUS had been turned off or to recover from any of the alarm conditions described below, the SIRIUS must be re-initiated with the software supplied.

1.2 SIRIUS Protection features

The SIRIUS models covered in this document has the following safety features:

- The unit will disconnect all electrical output to the terminals if the positive terminal bolt is loosened – Anti-Theft
- The unit will disconnect all electrical output and input to the terminals if the module reaches Voltage above the maximum specified (56VDC) (Over Voltage)
- The unit will disconnect all electrical output and input to the terminals if the module reaches Voltage below (44VDC) (Under Voltage)
- The unit will disconnect all electrical output and input to the terminals if the module reaches temperatures above 75 °C (Over Temperature)
- The unit will disconnect all electrical output and input to the terminals if the module reaches temperatures below -20 °C (Under Temperature)
- The unit will disconnect all electrical output and input to the terminals if the module reaches current above the maximum specified (100A for 3.55kWh and 200A for 7.1kWh) (Over Current)



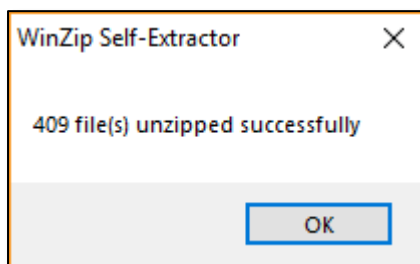
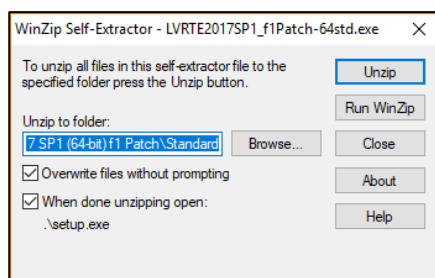
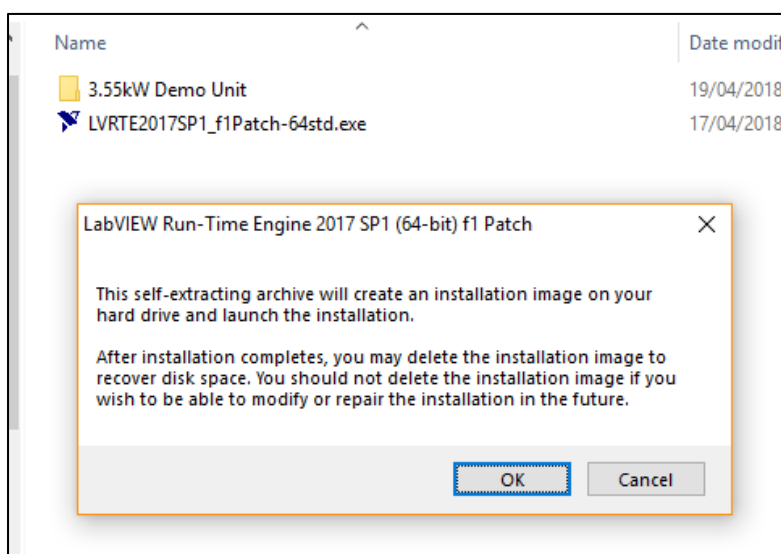
2. Installing the Software

2.2 LABVIEW RUNTIME

Available from the National Instruments (<http://www.ni.com>) Website as well as the www.3denergysolutions.co.za website is a copy of the installation file of LabView Runtime.

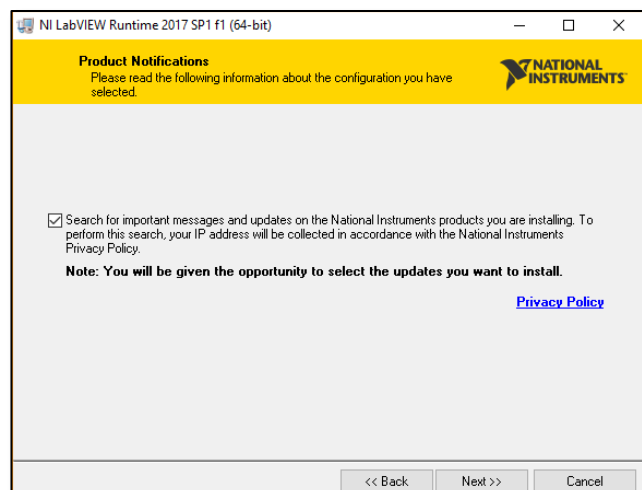
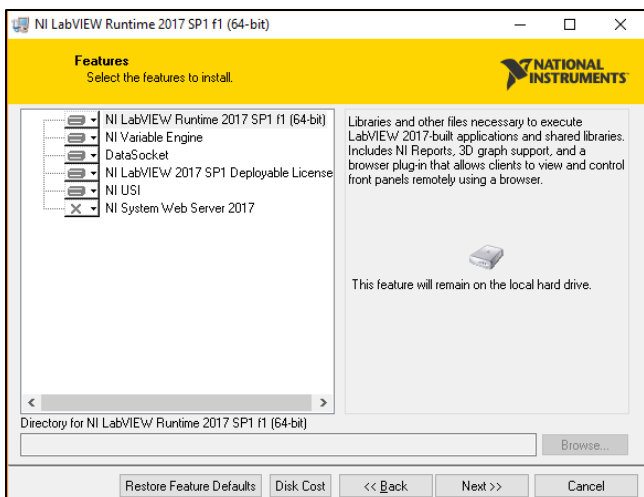
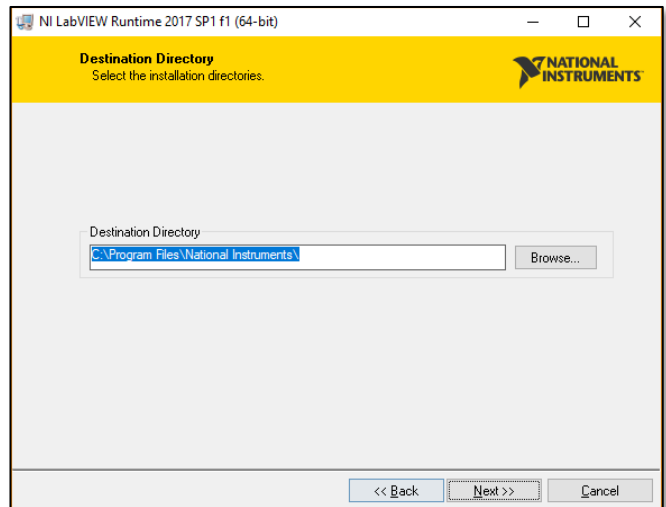
At Time of writing this document: [LVRTE2017_f2Patch-64std.exe](#)

The installation process displayed in a few screenshots below.





Selecting defaults all the way



This application is the platform required for the executable application that is supplied on the CD that is provided inside the SIRIUS packaging.

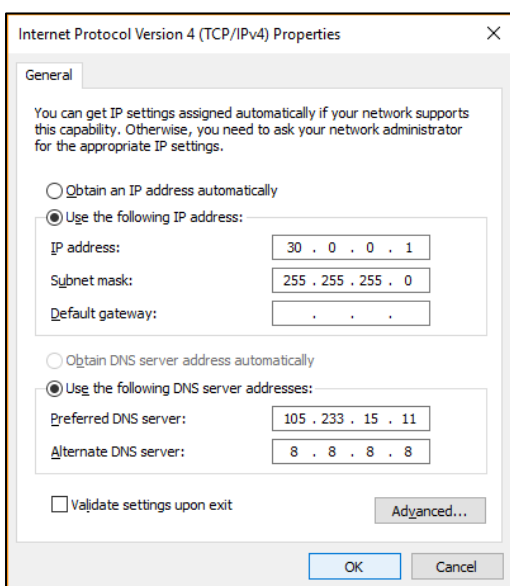
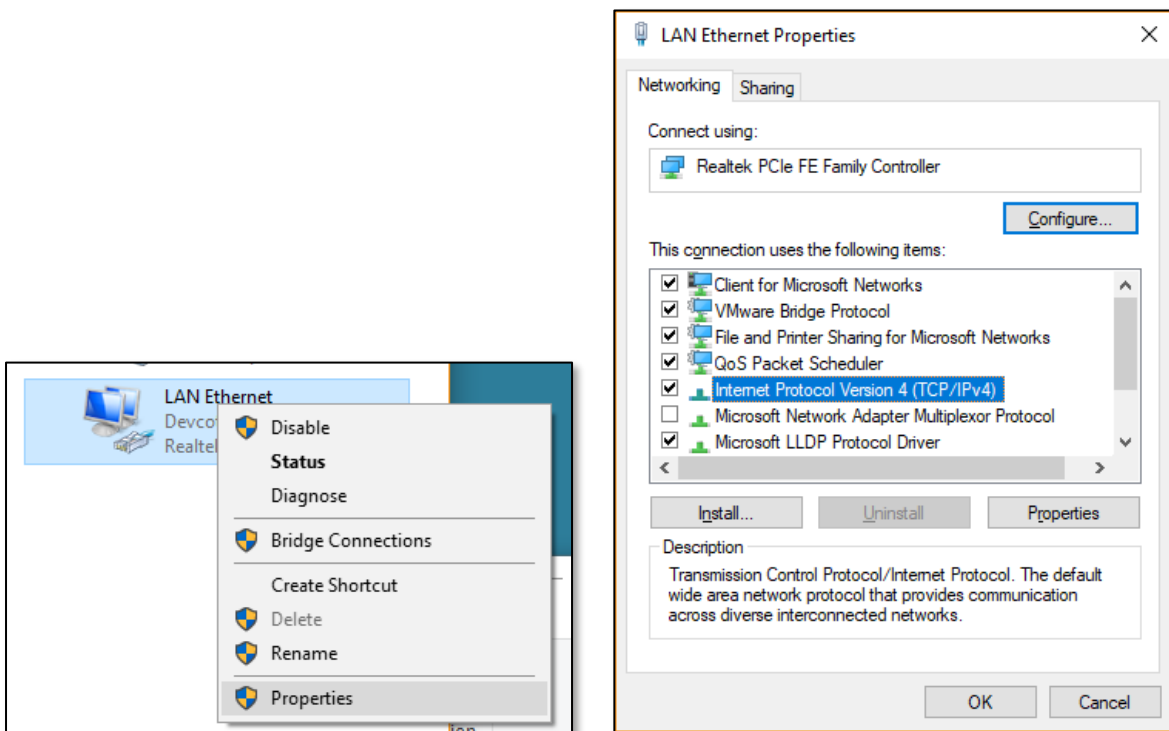
NOTE: LabView Runtime must be installed on a Notebook / laptop that will be available at the installed SIRIUS. You must unlock the SIRIUS, using this software once the unit has been installed in place.



2.3 SETTING UP YOUR COMPUTER'S TCP/IP SETTINGS

To communicate with the SIRIUS your laptop / computer IP settings must be set as follow:

1. **TCPIP V4 IP Address:** (As detailed on the back of the SIRIUS Module as "PC IP")
For this document we will use "30.0.0.1"
2. **TCPIP V4 Netmask:** 255.255.255.0



You will also need a Cat5 RJ45 Ethernet fly lead to plug connect between the Laptop / computer and the SIRIUS.



2.3 SIRIUS MONITORING SOFTWARE

Note: Each SIRIUS come with UNIQUE software. The IPADDRESS for the specific SIRIUS is hardcoded on the CD. You cannot use 1 CD to active all the installed SIRIUS Modules.

MAKE A BACKUP OF THE CD THAT SHIPPED WITH THE SIRIUS.

1. Copy the content of the CD to a folder on your Laptop.

Name	Date modified
Application.aliases	25/02/2018 15:40
Application.exe	25/02/2018 15:40
Application.ini	25/02/2018 15:40
test	19/04/2018 13:44

2. Open the location where files are stored and double click on “Application.exe”
3. The Monitoring Software will open



If the Laptop / computer is plugged into the SIRIUS Module and the Module is within normal operating parameters, the Sirius Module will activate.

You will be able to hear a click sound when the internal contactor closes.



After the monitoring software activates the SIRIUS Module voltage between 44VDC and 54VDC will be measurable on the terminals.

You can now disconnect the Laptop / Computer and the SIRIUS will remain live, until any of the conditions mentioned under 1.2 above presents itself.

